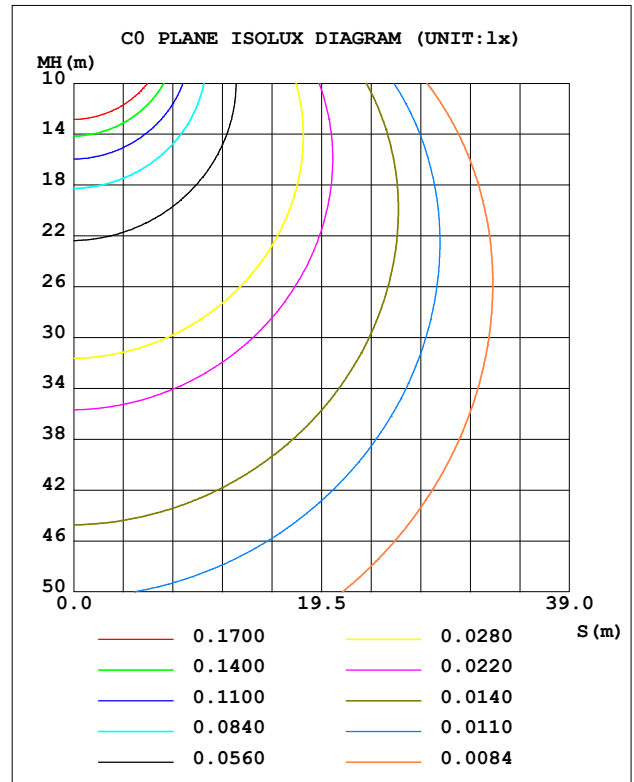
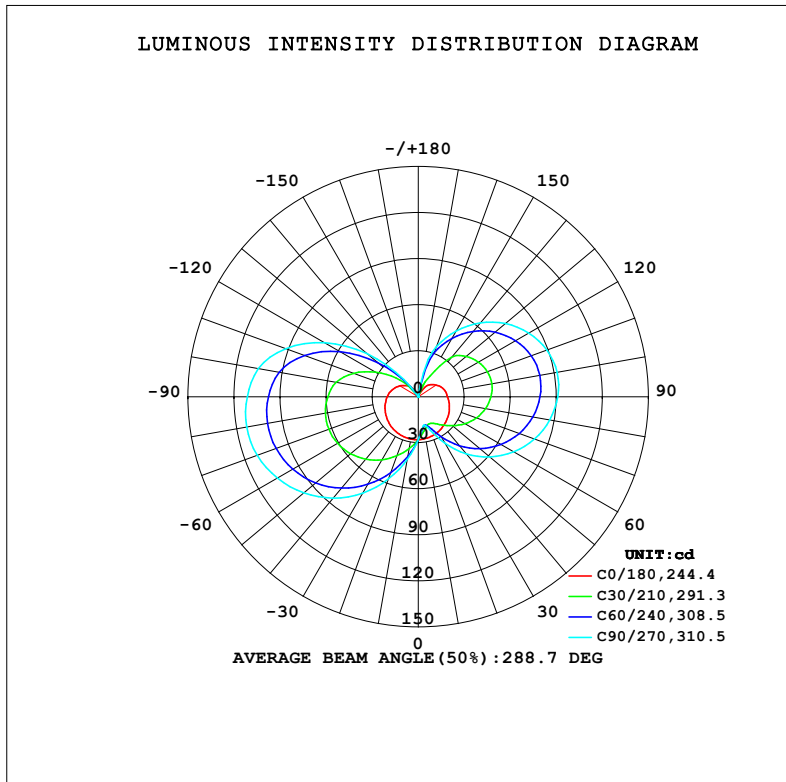


LUMINAIRE PHOTOMETRIC TEST REPORT

NAME: 95MALIA12LED/BL	TYPE:	WEIGHT: 1
SPEC.:	DIM.: 130 x 130 x 120	SERIAL No.: 0
MFR.: Elmark Industries JSC	SUR.: 2 circle	Shielding Angle:

DATA OF LAMP		PHOTOMETRIC DATA			
MODEL	95MALIA12LED/BL	I _{max} (cd)	113.6	S/MH (C0/180)	1.47
NOMINAL POWER (W)	12	LOR (%)	95.0	S/MH (C90/270)	3.25
RATED VOLTAGE (V)	230	TOTAL FLUX (lm)	627.30	η UP, DN (C0-180)	23.2, 21.0
NOMINAL FLUX (lm)	660	CIE CLASS	DIFFUSE	η UP, DN (C180-360)	18.7, 32.2
LAMPS INSIDE	1	η up (%)	41.9	CIBSE SHR NOM	1.50
TEST VOLTAGE (V)	230	η down (%)	53.1	CIBSE SHR MAX	1.55



C Range: 0 - 360DEG
C Interval: 10.0DEG
Test Speed: MEDIUM
Temperature: 25.3°C
Operators:
Test Date: 04 January 2023

γ Range: 0 - 170DEG
γ Interval: 2.5DEG
Test System: EVERFINE GO-2000A_V1 SYSTEM V2.00.456
Humidity: 65.0%
Test Distance: 6.340m [K=1.0000]
Remarks:

ZONAL FLUX DIAGRAM

ZONAL FLUX DIAGRAM:

γ	C0	C45	C90	C135	C180	C225	C270	C315	γ	Φ zone	Φ total	%lum, lamp
10	27.70	21.12	19.21	21.28	28.05	37.08	41.27	36.68	0- 10	2.723	2.723	0.43,0.41
20	27.11	19.62	23.06	19.25	27.83	47.33	56.97	46.38	10- 20	8.834	11.56	1.84,1.75
30	26.29	24.85	34.95	23.84	27.31	57.59	72.47	56.04	20- 30	17.09	28.65	4.57,4.34
40	25.27	33.18	48.53	31.57	26.53	66.75	86.22	64.61	30- 40	27.72	56.37	8.99,8.54
50	24.12	42.16	60.98	40.21	25.53	74.15	97.49	71.51	40- 50	39.63	96.01	15.3,14.5
60	22.92	50.22	71.82	48.05	24.38	79.45	106.0	76.42	50- 60	51.39	147.4	23.5,22.3
70	21.68	56.88	80.66	54.56	23.11	82.41	111.7	79.11	60- 70	61.61	209.0	33.3,31.7
80	20.42	61.88	87.07	59.49	21.75	82.79	113.6	79.37	70- 80	69.01	278.0	44.3,42.1
90	19.15	65.05	90.88	62.66	20.28	80.33	111.4	76.92	80- 90	72.55	350.6	55.9,53.1
100	18.37	66.30	91.92	63.93	18.75	75.20	105.8	71.96	90-100	71.81	422.4	67.3,64
110	16.90	64.82	89.17	62.54	16.62	63.34	91.90	60.49	100-110	65.74	488.1	77.8,74
120	14.89	60.80	83.18	58.69	14.23	46.20	70.47	43.88	110-120	54.12	542.2	86.4,82.2
130	12.49	54.55	74.29	52.70	11.61	26.80	43.78	25.29	120-130	39.56	581.8	92.7,88.2
140	9.995	46.43	62.91	44.86	9.048	10.25	14.77	9.748	130-140	24.99	606.8	96.7,91.9
150	5.045	33.40	49.54	35.36	3.376	1.300	0.3883	1.348	140-150	13.01	619.8	98.8,93.9
160	0.4602	21.35	34.67	21.63	0.7891	0.3705	0.3576	0.3501	150-160	5.837	625.6	99.7,94.8
170	0.3987	0.4852	5.291	0.5002	0.3959	0.3677	0.3548	0.3571	160-170	1.644	627.3	100,95
180	0	0	0	0	0	0	0	0	170-180	0.0230	627.3	100,95
DEG	LUMINOUS INTENSITY:cd									UNIT:lm		

Conical surface Flux(90deg): 74.676 lm

%lum = 11.9%

%lamp = 11.3%

Conical surface Flux(130deg): 177.07 lm

%lum = 28.2%

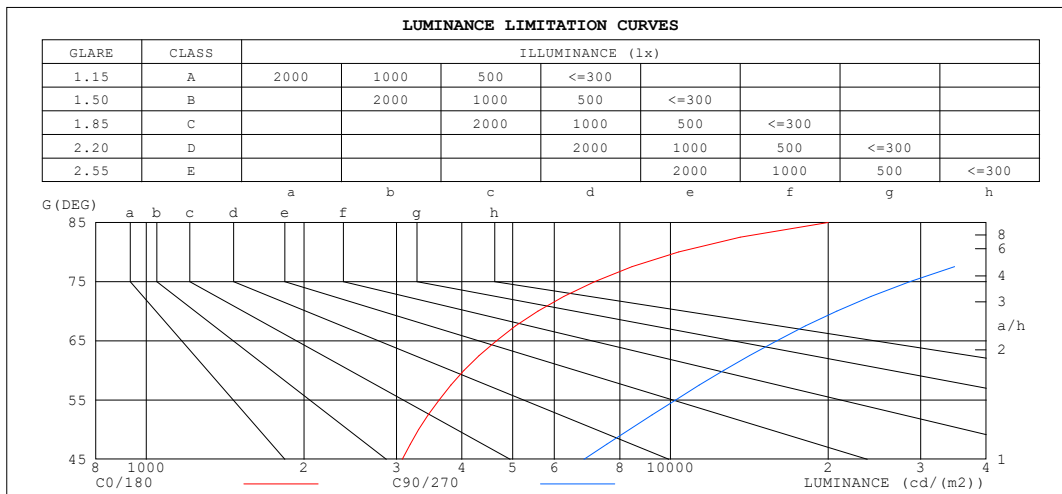
%lamp = 26.8%

C Range: 0 - 360DEG
C Interval: 10.0DEG
Test Speed: MEDIUM
Temperature:25.3°C
Operators:
Test Date:04 January 2023

γ Range: 0 - 170DEG
 γ Interval: 2.5DEG
Test System:EVERFINE GO-2000A_V1 SYSTEM V2.00.456
Humidity:65.0%
Test Distance:6.340m [K=1.0000]
Remarks:

LUMINANCE LIMITATION CURVES

NAME: 95MALIA12LED/BL	TYPE:	WEIGHT: 1
SPEC.:	DIM.: 130 x 130 x 120	SERIAL No.: 0
MFR.: Elmark Industries JSC	SUR.: 2 circle	Shielding Angle:



LUMINANCE cd/(m2)		
G (DEG)	C0/180	C90/270
85	19998	90099
80	10364	44112
75	7168	28618
70	5587	20749
65	4650	15930
60	4039	12638
55	3616	10221
50	3308	8347
45	3079	6836

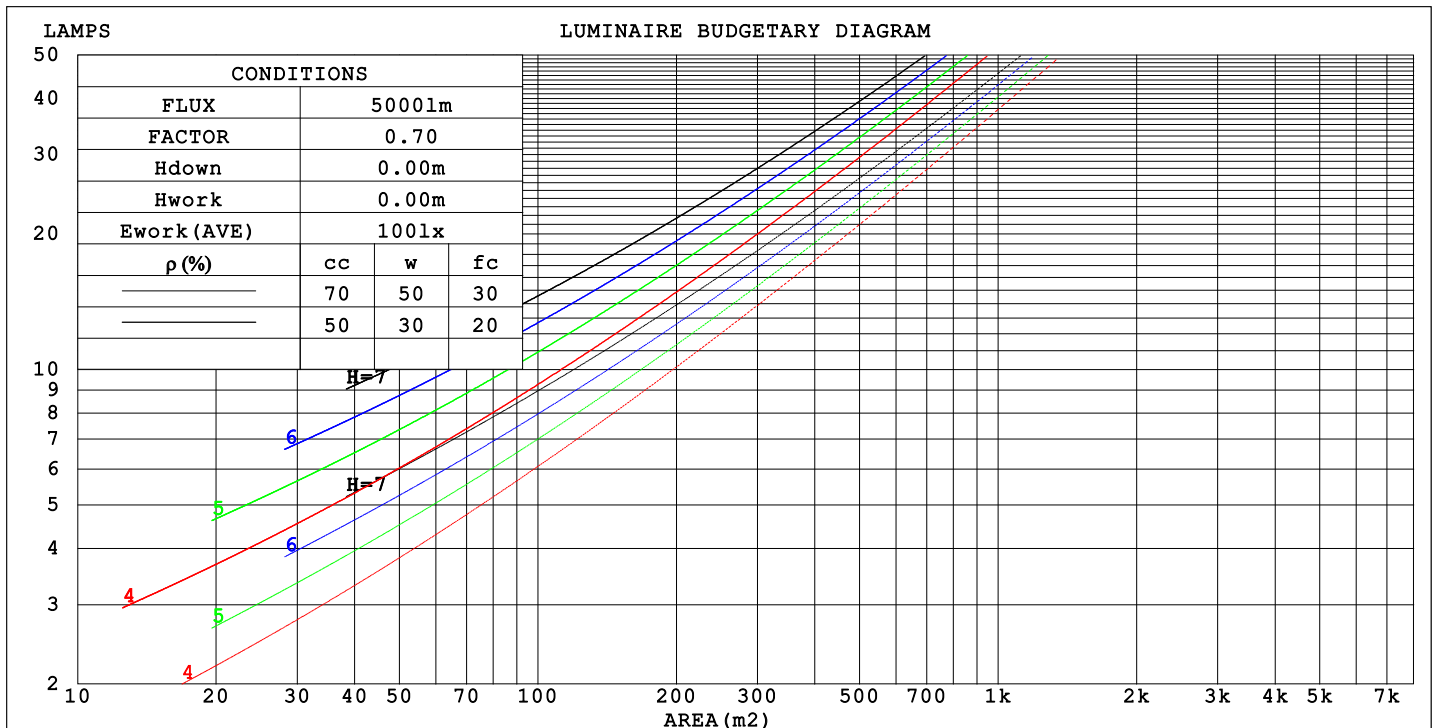
C Range: 0 - 360DEG
C Interval: 10.0DEG
Test Speed: MEDIUM
Temperature: 25.3°C
Operators:
Test Date: 04 January 2023

γ Range: 0 - 170DEG
γ Interval: 2.5DEG
Test System: EVERFINE GO-2000A_V1 SYSTEM V2.00.456
Humidity: 65.0%
Test Distance: 6.340m [K=1.0000]
Remarks:

CU AND LUMINAIRE BUDGETARY ESTIMATE DIAGRAM

NAME: 95MALIA12LED/BL	TYPE:	WEIGHT: 1
SPEC.:	DIM.: 130 x 130 x 120	SERIAL No.: 0
MFR.: Elmark Industries JSC	SUR.: 2 circle	Shielding Angle:

pcc	80%			70%			50%			30%			10%			0
pw	50%	30%	10%	50%	30%	10%	50%	30%	10%	50%	30%	10%	50%	30%	10%	0
pfc	20%			20%			20%			20%			20%			0
RCR	RCR:Room Cavity Ratio															



C Range: 0 - 360DEG
C Interval: 10.0DEG
Test Speed: MEDIUM
Temperature:25.3°C
Operators:
Test Date:04 January 2023

γ Range: 0 - 170DEG
γ Interval: 2.5DEG
Test System:EVERFINE GO-2000A_V1 SYSTEM V2.00.456
Humidity:65.0%
Test Distance:6.340m [K=1.0000]
Remarks:

WEC AND CCEC

NAME: 95MALIA12LED/BL	TYPE:	WEIGHT: 1
SPEC.:	DIM.: 130 x 130 x 120	SERIAL No.: 0
MFR.: Elmark Industries JSC	SUR.: 2 circle	Shielding Angle:

pcc	80%			70%			50%			30%			10%			0
pw	50%	30%	10%	50%	30%	10%	50%	30%	10%	50%	30%	10%	50%	30%	10%	0
pfc	20%			20%			20%			20%			20%			0
RCR	RCR:Room Cavity Ratio						Wall Exitance Coefficients(WEC)									
0.0																
1.0	.421	.239	.076	.401	.229	.073	.364	.209	.067	.330	.190	.061	.299	.173	.056	
2.0	.346	.190	.058	.328	.181	.056	.294	.164	.051	.263	.148	.046	.234	.133	.042	
3.0	.299	.159	.048	.283	.151	.046	.252	.136	.041	.223	.122	.038	.197	.109	.034	
4.0	.264	.137	.040	.249	.131	.039	.221	.117	.035	.195	.105	.032	.171	.093	.028	
5.0	.237	.121	.035	.224	.115	.033	.198	.103	.030	.174	.092	.027	.151	.081	.024	
6.0	.215	.108	.031	.203	.102	.029	.179	.092	.027	.157	.081	.024	.136	.071	.021	
7.0	.197	.098	.028	.186	.092	.026	.164	.083	.024	.143	.073	.021	.123	.064	.019	
8.0	.182	.089	.025	.171	.084	.024	.151	.075	.021	.131	.067	.019	.113	.058	.017	
9.0	.169	.082	.023	.159	.077	.022	.140	.069	.020	.122	.061	.017	.105	.053	.015	
10.0	.157	.075	.021	.148	.071	.020	.130	.064	.018	.113	.056	.016	.097	.049	.014	

pcc	80%			70%			50%			30%			10%			0
pw	50%	30%	10%	50%	30%	10%	50%	30%	10%	50%	30%	10%	50%	30%	10%	0
pfc	20%			20%			20%			20%			20%			0
RCR	RCR:Room Cavity Ratio						Ceiling Cavity Exitance Coefficients (CCEC)									
0.0	.501	.501	.501	.428	.428	.428	.292	.292	.292	.168	.168	.168	.054	.054	.054	
1.0	.502	.469	.440	.430	.403	.379	.294	.277	.262	.169	.160	.152	.054	.052	.049	
2.0	.497	.449	.409	.426	.387	.354	.292	.268	.247	.168	.156	.145	.054	.050	.047	
3.0	.491	.435	.391	.421	.375	.339	.289	.261	.238	.167	.152	.140	.054	.049	.046	
4.0	.483	.424	.379	.415	.366	.329	.285	.255	.232	.165	.150	.137	.053	.049	.045	
5.0	.476	.415	.371	.409	.359	.322	.282	.251	.228	.163	.147	.135	.053	.048	.045	
6.0	.469	.408	.365	.403	.354	.318	.278	.248	.225	.161	.146	.134	.052	.048	.044	
7.0	.462	.403	.361	.398	.349	.314	.275	.245	.223	.160	.144	.133	.052	.047	.044	
8.0	.456	.398	.358	.392	.345	.312	.272	.242	.221	.158	.143	.132	.051	.047	.044	
9.0	.450	.393	.355	.388	.341	.310	.268	.240	.220	.156	.142	.131	.051	.047	.043	
10.0	.444	.390	.353	.383	.338	.308	.266	.238	.219	.155	.141	.131	.050	.046	.043	

C Range: 0 - 360DEG
C Interval: 10.0DEG
Test Speed: MEDIUM
Temperature:25.3°C
Operators:
Test Date:04 January 2023

γ Range: 0 - 170DEG
γ Interval: 2.5DEG
Test System:EVERFINE GO-2000A_V1 SYSTEM V2.00.456
Humidity:65.0%
Test Distance:6.340m [K=1.0000]
Remarks:

UGR(Unified Glare Rating) Table

NAME: 95MALIA12LED/BL					TYPE:					WEIGHT: 1				
SPEC.:					DIM.: 130 x 130 x 120					SERIAL No.: 0				
MFR.: Elmark Industries JSC					SUR.: 2 circle					Shielding Angle:				
ceiling/cavity	0.7	0.7	0.5	0.5	0.3	0.7	0.7	0.5	0.5	0.3				
walls	0.5	0.3	0.5	0.3	0.3	0.5	0.3	0.5	0.3	0.3				
working plane	0.2	0.2	0.2	0.2	0.2	0.2	0.2	0.2	0.2	0.2				
Room dimensions		Viewed crosswise					Viewed endwise							
x = 2H y = 2H	13.8	15.0	14.6	15.8	16.9	20.0	21.2	20.8	22.0	23.1				
3H	16.4	17.5	17.2	18.4	19.5	24.0	25.1	24.8	25.9	27.0				
4H	17.9	18.9	18.7	19.8	20.9	26.2	27.2	27.0	28.1	29.2				
6H	19.6	20.5	20.4	21.4	22.6	28.6	29.5	29.4	30.4	31.5				
8H	20.6	21.5	21.4	22.4	23.5	29.8	30.8	30.7	31.7	32.8				
12H	21.7	22.6	22.6	23.5	24.7	31.3	32.2	32.2	33.1	34.2				
4H 2H	17.1	18.2	18.0	19.0	20.2	20.6	21.6	21.4	22.5	23.6				
3H	19.7	20.6	20.6	21.5	22.7	24.8	25.7	25.7	26.6	27.8				
4H	21.1	21.9	22.0	22.8	24.0	27.2	28.1	28.1	29.0	30.2				
6H	22.5	23.3	23.5	24.2	25.4	29.8	30.6	30.7	31.5	32.7				
8H	23.3	24.0	24.3	25.0	26.2	31.2	31.9	32.2	32.9	34.1				
12H	24.3	24.9	25.2	25.9	27.1	32.8	33.5	33.7	34.4	35.6				
8H 4H	23.5	24.2	24.4	25.2	26.4	27.6	28.3	28.6	29.3	30.5				
6H	25.3	25.9	26.3	26.9	28.1	30.6	31.1	31.5	32.1	33.4				
8H	26.2	26.8	27.2	27.8	29.0	32.2	32.7	33.2	33.7	35.0				
12H	27.2	27.7	28.2	28.7	29.9	34.1	34.5	35.0	35.5	36.8				
12H 4H	24.3	25.0	25.3	25.9	27.2	27.7	28.3	28.6	29.3	30.5				
6H	26.4	26.9	27.4	27.9	29.2	30.7	31.2	31.7	32.2	33.5				
8H	27.5	28.0	28.5	29.0	30.3	32.5	33.0	33.5	33.9	35.2				
Variations with the observer position at spacings(CIE Pub.117):														
S = 1.0H	+ 0.1 / - 0.1					+ 0.1 / - 0.1								
1.5H	+ 0.1 / - 0.1					+ 0.2 / - 0.3								
2.0H	+ 0.2 / - 0.2					+ 0.3 / - 0.4								

CIE Pub.117, 660.0 lm Total Lamp Luminous Flux Correct (8log(F/F0) = -1.4)
Area: 0.0113433 m2

C Range: 0 - 360DEG
C Interval: 10.0DEG
Test Speed: MEDIUM
Temperature:25.3°C
Operators:
Test Date:04 January 2023

γ Range: 0 - 170DEG
γ Interval: 2.5DEG
Test System:EVERFINE GO-2000A_V1 SYSTEM V2.00.456
Humidity:65.0%
Test Distance:6.340m [K=1.0000]
Remarks:

UTILIZATION FACTORS TABLE

NAME: 95MALIA12LED/BL	TYPE:	WEIGHT: 1
SPEC.:	DIM.: 130 x 130 x 120	SERIAL No.: 0
MFR.: Elmark Industries JSC	SUR.: 2 circle	Shielding Angle:

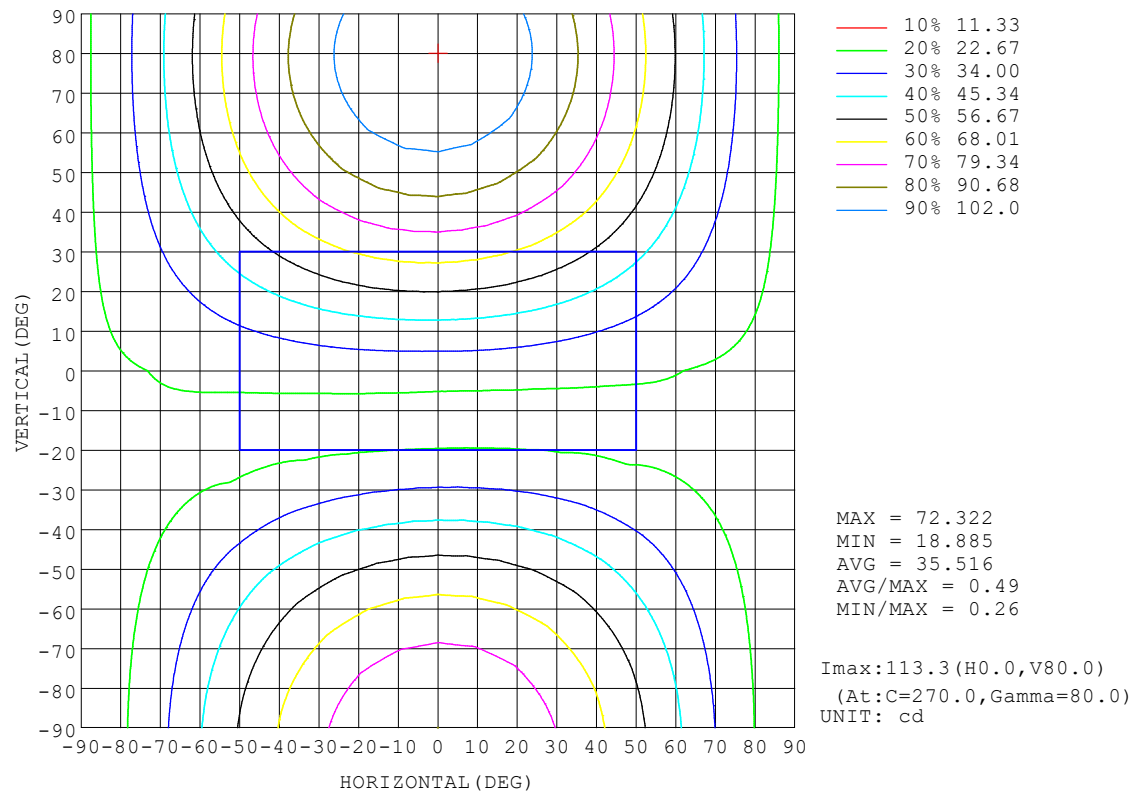
REFLECTANCE										
Ceiling	0.8	0.8	0.8	0.7	0.7	0.7	0.5	0.5	0.5	0
Walls	0.7	0.5	0.3	0.7	0.5	0.3	0.7	0.5	0.3	0
Working plane	0.2	0.2	0.2	0.2	0.2	0.2	0.2	0.2	0.2	0
ROOM INDEX	UTILIZATION FACTORS (PERCENT) $k(RI) \times RCR = 5$									
$k = 0.60$	34	21	14	32	20	14	29	19	13	6
0.80	42	28	20	39	27	19	35	24	17	9
1.00	48	34	25	46	33	24	40	31	22	12
1.25	55	41	31	51	39	30	45	34	27	15
1.50	60	46	36	56	43	35	49	39	31	17
2.00	67	54	45	63	51	42	54	45	38	22
2.50	72	60	51	67	57	48	58	49	42	25
3.00	76	65	56	71	61	53	61	53	47	27
4.00	82	72	64	76	67	60	65	58	52	31
5.00	85	77	69	79	71	65	68	62	56	34
ROOM INDEX	UF(total)									Direct
According to DIN EN 13032-2 2004			Suspended					SHRNOM = 1.25		

C Range: 0 - 360DEG
C Interval: 10.0DEG
Test Speed: MEDIUM
Temperature: 25.3°C
Operators:
Test Date: 04 January 2023

γ Range: 0 - 170DEG
γ Interval: 2.5DEG
Test System: EVERFINE GO-2000A_V1 SYSTEM V2.00.456
Humidity: 65.0%
Test Distance: 6.340m [K=1.0000]
Remarks:

ISOCANDELA DIAGRAM

NAME: 95MALIA12LED/BL	TYPE:	WEIGHT: 1
SPEC.:	DIM.: 130 x 130 x 120	SERIAL No.: 0
MFR.: Elmark Industries JSC	SUR.: 2 circle	Shielding Angle:

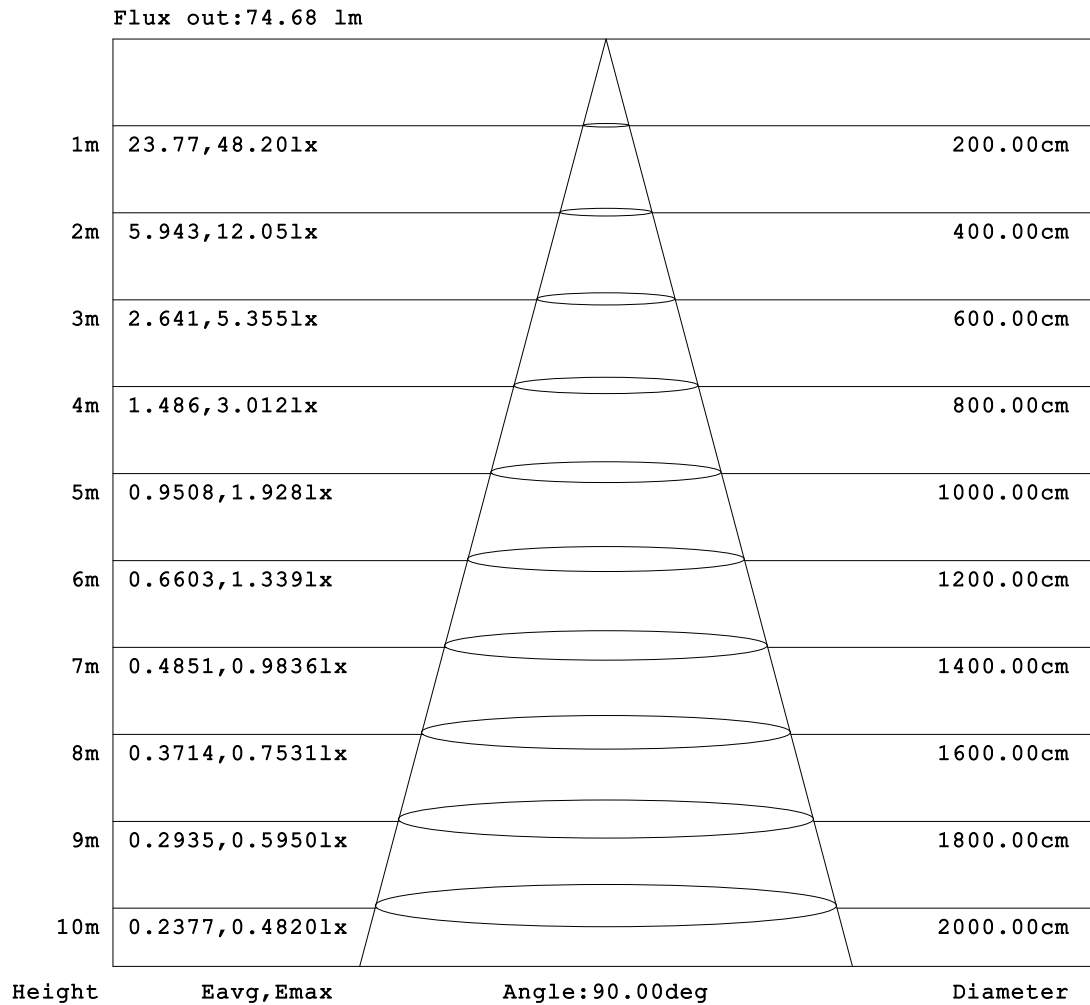


C Range: 0 - 360DEG
C Interval: 10.0DEG
Test Speed: MEDIUM
Temperature: 25.3°C
Operators:
Test Date: 04 January 2023

γ Range: 0 - 170DEG
γ Interval: 2.5DEG
Test System: EVERFINE GO-2000A_V1 SYSTEM V2.00.456
Humidity: 65.0%
Test Distance: 6.340m [K=1.0000]
Remarks:

AAI Figure

NAME: 95MALIA12LED/BL	TYPE:	WEIGHT: 1
SPEC.:	DIM.: 130 x 130 x 120	SERIAL No.: 0
MFR.: Elmark Industries JSC	SUR.: 2 circle	Shielding Angle:



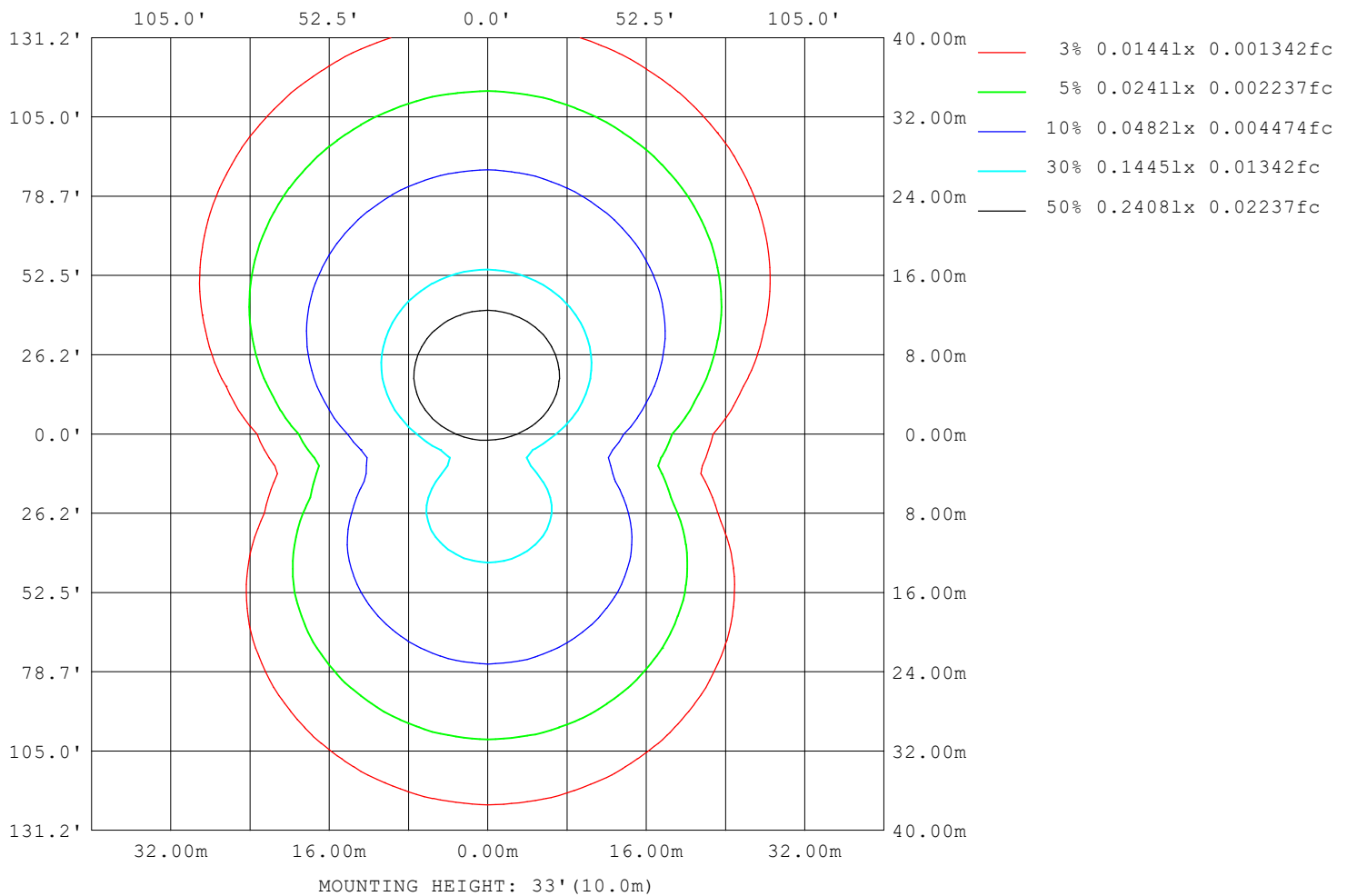
Note:The Curves indicate the illuminated area and the average illumination when the luminaire is at different distance.

C Range: 0 - 360DEG
C Interval: 10.0DEG
Test Speed: MEDIUM
Temperature:25.3°C
Operators:
Test Date:04 January 2023

γ Range: 0 - 170DEG
γ Interval: 2.5DEG
Test System:EVERFINE GO-2000A_V1 SYSTEM V2.00.456
Humidity:65.0%
Test Distance:6.340m [K=1.0000]
Remarks:

ISOLUX DIAGRAM

NAME: 95MALIA12LED/BL	TYPE:	WEIGHT: 1
SPEC.:	DIM.: 130 x 130 x 120	SERIAL No.: 0
MFR.: Elmark Industries JSC	SUR.: 2 circle	Shielding Angle:



C Range: 0 - 360DEG
C Interval: 10.0DEG
Test Speed: MEDIUM
Temperature: 25.3°C
Operators:
Test Date: 04 January 2023

γ Range: 0 - 170DEG
γ Interval: 2.5DEG
Test System: EVERFINE GO-2000A_V1 SYSTEM V2.00.456
Humidity: 65.0%
Test Distance: 6.340m [K=1.0000]
Remarks:

LED Avg.L Report

NAME: 95MALIA12LED/BL	TYPE:	WEIGHT: 1
SPEC.:	DIM.: 130 x 130 x 120	SERIAL No.: 0
MFR.: Elmark Industries JSC	SUR.: 2 circle	Shielding Angle:

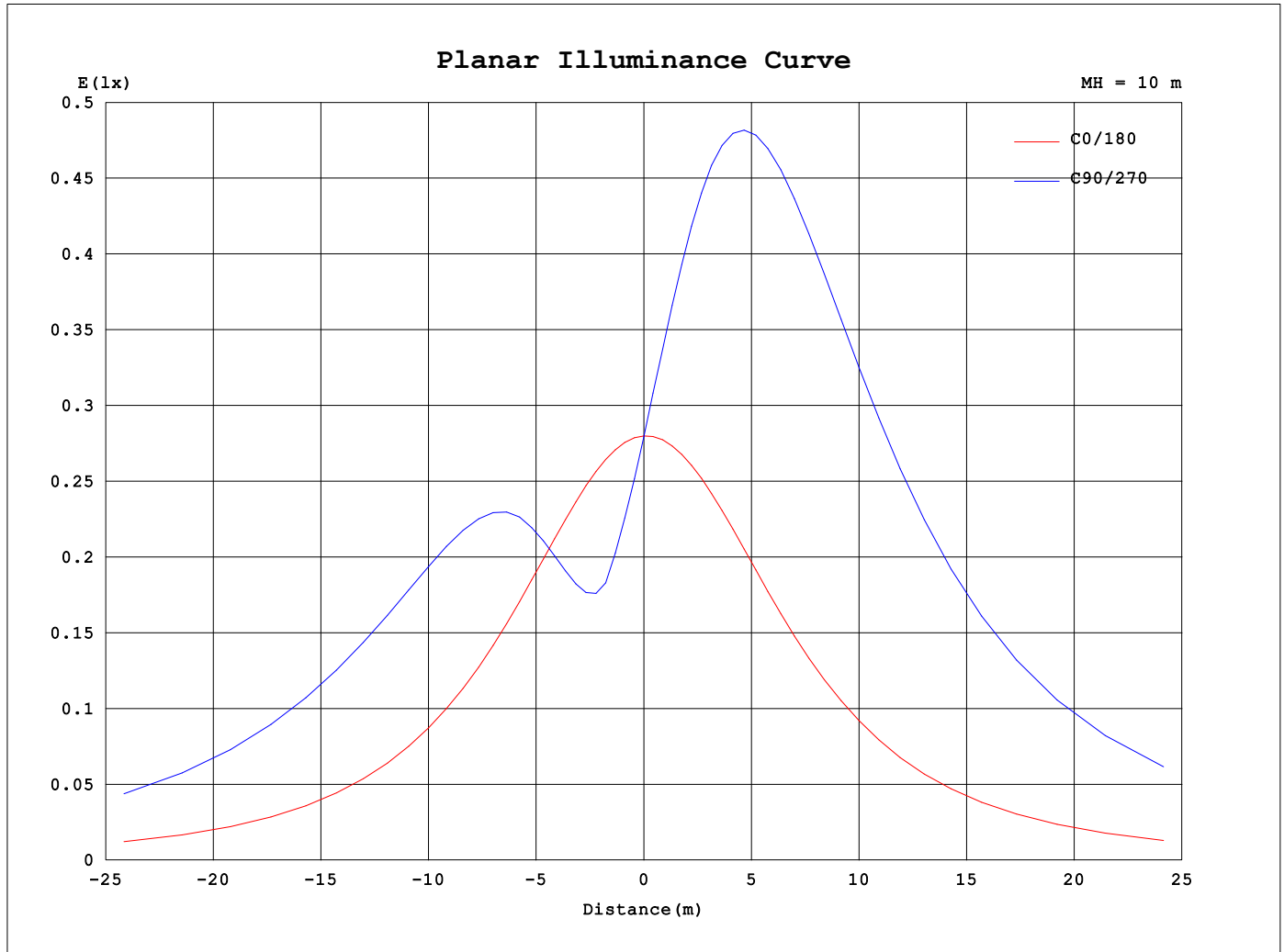
AvgL	cd/m2
L_0~180 (65) av	4803
L_0~180 (75) av	7406
L_0~180 (85) av	20639
L_90~270 (65) av	19371
L_90~270 (75) av	33601
L_90~270 (85) av	102318
L_45 (65) av	13840
L_45 (75) av	23863
L_45 (85) av	72418

Standard: GB/T 29293-2012

C Range: 0 - 360DEG
C Interval: 10.0DEG
Test Speed: MEDIUM
Temperature:25.3°C
Operators:
Test Date:04 January 2023

γ Range: 0 - 170DEG
γ Interval: 2.5DEG
Test System:EVERFINE GO-2000A_V1 SYSTEM V2.00.456
Humidity:65.0%
Test Distance:6.340m [K=1.0000]
Remarks:

Planar Illuminance Curve



C Range: 0 - 360DEG
 C Interval: 10.0DEG
 Test Speed: MEDIUM
 Temperature: 25.3°C
 Operators:
 Test Date: 04 January 2023

γ Range: 0 - 170DEG
 γ Interval: 2.5DEG
 Test System: EVERFINE GO-2000A_V1 SYSTEM V2.00.456
 Humidity: 65.0%
 Test Distance: 6.340m [K=1.0000]
 Remarks:

LUMINOUS DISTRIBUTION INTENSITY DATA

NAME: 95MALIA12LED/BL	TYPE:	WEIGHT: 1
SPEC.:	DIM.: 130 x 130 x 120	SERIAL No.: 0
MFR.: Elmark Industries JSC	SUR.: 2 circle	Shielding Angle:

Table--1

UNIT: cd

C (DEG) γ (DEG)	0	10	20	30	40	50	60	70	80	90	100	110	120	130	140	150	160	170	180
0	28.0	28.0	28.0	28.0	28.0	28.0	28.0	28.0	28.0	28.0	28.0	28.0	28.0	28.0	28.0	28.0	28.0	28.0	28.0
5	27.9	26.9	26.0	25.2	24.5	23.9	23.5	23.1	23.0	22.9	23.0	23.2	23.5	24.0	24.6	25.4	26.2	27.1	28.1
10	27.7	25.8	24.2	22.7	21.6	20.7	20.0	19.5	19.3	19.2	19.3	19.5	20.1	20.8	21.8	23.0	24.5	26.2	28.1
15	27.4	24.7	22.5	20.6	19.3	19.0	19.1	19.4	19.6	19.6	19.5	19.2	19.0	18.9	19.4	20.9	22.8	25.2	28.0
20	27.1	23.7	21.0	19.2	19.2	20.0	21.2	22.2	22.9	23.1	22.8	21.9	20.8	19.6	18.9	19.2	21.4	24.2	27.8
25	26.7	22.7	19.6	19.2	20.6	22.7	25.1	26.9	28.2	28.4	27.9	26.4	24.4	22.0	19.9	18.8	20.0	23.3	27.6
30	26.3	21.7	19.1	20.2	23.1	26.6	30.1	32.7	34.6	35.0	34.2	32.1	29.2	25.6	22.1	19.5	19.0	22.4	27.3
35	25.8	20.8	19.2	21.9	26.3	31.2	35.9	39.2	41.4	41.8	41.0	38.5	34.8	29.9	25.0	20.8	18.8	21.5	26.9
40	25.3	20.0	19.9	24.1	30.1	36.3	41.7	45.5	48.0	48.5	47.6	44.7	40.5	34.8	28.4	22.6	19.1	20.7	26.5
45	24.7	19.3	20.8	26.6	34.1	41.3	47.4	51.6	54.3	54.9	53.9	50.7	46.0	39.7	32.1	24.9	19.7	19.9	26.1
50	24.1	19.1	22.1	29.4	38.2	46.1	52.7	57.3	60.3	61.0	59.8	56.4	51.3	44.3	36.1	27.4	20.7	19.2	25.5
55	23.5	19.2	23.6	32.3	42.1	50.6	57.7	62.7	65.9	66.6	65.4	61.7	56.2	48.7	39.8	30.0	21.9	18.9	25.0
60	22.9	19.4	25.2	35.2	45.7	54.8	62.3	67.6	71.0	71.8	70.5	66.6	60.7	52.8	43.3	32.6	23.2	18.8	24.4
65	22.3	19.7	26.9	38.0	49.0	58.5	66.4	72.1	75.7	76.5	75.1	71.0	64.8	56.4	46.5	35.3	24.6	18.9	23.8
70	21.7	20.2	28.5	40.4	51.9	61.8	70.1	76.0	79.8	80.7	79.2	74.9	68.4	59.7	49.4	37.7	26.1	19.1	23.1
75	21.0	20.7	30.1	42.6	54.5	64.7	73.2	79.4	83.3	84.2	82.6	78.2	71.5	62.6	51.9	39.8	27.5	19.4	22.4
80	20.4	21.3	31.6	44.5	56.6	67.1	75.9	82.1	86.1	87.1	85.5	81.0	74.1	64.9	54.1	41.7	28.8	19.8	21.7
85	19.8	21.9	32.8	46.1	58.4	69.0	77.9	84.3	88.3	89.3	87.6	83.1	76.2	66.8	55.8	43.2	30.0	20.3	21.0
90	19.2	22.5	33.9	47.4	59.7	70.4	79.4	85.8	89.8	90.9	89.2	84.6	77.6	68.2	57.1	44.5	31.0	20.7	20.3
95	18.8	23.1	34.9	48.3	60.6	71.3	80.2	86.6	90.7	91.8	90.0	85.4	78.5	69.1	58.0	45.5	32.0	21.2	19.6
100	18.4	23.5	35.5	48.8	61.0	71.6	80.4	86.7	90.8	91.9	90.2	85.6	78.7	69.4	58.5	46.0	32.6	21.5	18.7
105	17.7	23.5	35.6	48.7	60.7	71.1	79.8	86.0	90.0	91.0	89.3	84.9	78.1	69.0	58.2	45.9	32.7	21.4	17.7
110	16.9	23.3	35.2	48.0	59.7	69.9	78.4	84.4	88.2	89.2	87.6	83.3	76.7	67.8	57.3	45.3	32.4	21.2	16.6
115	16.0	22.9	34.5	46.9	58.2	68.0	76.1	82.0	85.6	86.5	85.1	80.9	74.6	66.0	55.8	44.2	31.8	20.8	15.5
120	14.9	22.1	33.5	45.3	56.1	65.5	73.2	78.8	82.3	83.2	81.8	77.8	71.7	63.5	53.9	42.8	30.8	20.1	14.2
125	13.7	21.2	32.0	43.3	53.5	62.4	69.7	74.9	78.2	79.1	77.7	74.0	68.2	60.5	51.4	40.9	29.6	19.2	12.9
130	12.5	20.0	30.3	40.8	50.4	58.7	65.5	70.4	73.5	74.3	73.0	69.5	64.2	57.0	48.4	38.6	28.0	18.1	11.6
135	11.2	18.5	27.8	38.0	46.9	54.5	60.8	65.3	68.2	68.9	67.7	64.5	59.6	52.9	45.0	36.0	26.2	16.7	10.3
140	9.99	16.0	22.1	33.6	42.9	49.9	55.6	59.7	62.2	62.9	61.8	58.9	54.5	48.5	41.3	33.0	23.3	14.6	9.05
145	8.03	12.7	14.2	24.6	36.9	44.8	49.9	53.6	55.9	56.4	55.5	52.9	48.9	43.6	37.1	29.3	17.3	11.8	6.66
150	5.04	8.11	7.82	15.9	28.7	38.1	43.9	47.1	49.0	49.5	48.7	46.5	43.0	38.3	32.4	23.5	9.90	7.96	3.38
155	1.80	2.68	2.26	10.6	22.5	31.6	37.4	40.2	41.9	42.3	41.6	39.7	36.7	32.8	26.5	15.3	3.18	3.62	1.09
160	0.46	0.51	0.45	5.41	16.8	25.8	30.7	33.0	34.4	34.7	34.1	32.6	30.1	25.9	17.4	5.54	0.64	0.82	0.79
165	0.44	0.84	0.44	0.46	4.60	11.9	18.3	22.8	24.7	25.3	24.6	22.5	17.9	11.4	4.29	0.48	0.46	0.87	0.62
170	0.40	1.40	0.96	0.53	0.47	0.50	1.76	3.48	4.86	5.29	4.77	3.33	1.64	0.51	0.49	0.58	1.08	1.10	0.40
175	0.00	0.00	0.00	0.00	0.00	0.00	0.00	0.00	0.00	0.00	0.00	0.00	0.00	0.00	0.00	0.00	0.00	0.00	0.00
180	0.00	0.00	0.00	0.00	0.00	0.00	0.00	0.00	0.00	0.00	0.00	0.00	0.00	0.00	0.00	0.00	0.00	0.00	0.00

C Range: 0 - 360DEG

C Interval: 10.0DEG

Test Speed: MEDIUM

Temperature:25.3°C

Operators:

Test Date:04 January 2023

γ Range: 0 - 170DEG

γ Interval: 2.5DEG

Test System:EVERFINE GO-2000A_V1 SYSTEM V2.00.456

Humidity:65.0%

Test Distance:6.340m [K=1.0000]

Remarks:

LUMINOUS DISTRIBUTION INTENSITY DATA

NAME: 95MALIA12LED/BL	TYPE:	WEIGHT: 1
SPEC.:	DIM.: 130 x 130 x 120	SERIAL No.: 0
MFR.: Elmark Industries JSC	SUR.: 2 circle	Shielding Angle:

Table--2

UNIT: cd

C (DEG) γ (DEG)	190	200	210	220	230	240	250	260	270	280	290	300	310	320	330	340	350		
0	28.0	28.0	28.0	28.0	28.0	28.0	28.0	28.0	28.0	28.0	28.0	28.0	28.0	28.0	28.0	28.0	28.0		
5	29.1	30.1	31.1	31.9	32.7	33.4	33.8	34.1	34.2	34.1	33.8	33.2	32.6	31.8	30.9	29.9	28.9		
10	30.1	32.2	34.3	36.2	38.0	39.4	40.5	41.1	41.3	41.0	40.2	39.1	37.6	35.8	33.8	31.7	29.7		
15	31.1	34.3	37.6	40.7	43.5	45.9	47.6	48.7	49.0	48.5	47.3	45.4	42.9	40.0	36.8	33.6	30.4		
20	31.9	36.4	40.9	45.3	49.3	52.7	55.1	56.6	57.0	56.3	54.6	51.9	48.4	44.3	39.9	35.4	31.0		
25	32.7	38.4	44.2	50.0	55.1	59.4	62.5	64.4	64.9	64.1	61.8	58.4	53.9	48.6	42.9	37.1	31.5		
30	33.4	40.2	47.4	54.5	60.7	65.9	69.6	71.9	72.5	71.5	68.8	64.7	59.3	52.8	45.7	38.6	32.0		
35	33.9	41.9	50.4	58.7	66.0	72.0	76.3	79.0	79.6	78.5	75.3	70.6	64.3	56.8	48.4	40.0	32.3		
40	34.3	43.4	53.2	62.6	70.9	77.7	82.5	85.5	86.2	84.9	81.4	76.1	68.9	60.3	50.9	41.2	32.4		
45	34.5	44.7	55.6	66.1	75.3	82.8	88.1	91.4	92.2	90.8	86.8	81.0	73.0	63.6	53.0	42.3	32.5		
50	34.6	45.8	57.7	69.2	79.1	87.3	93.1	96.7	97.5	95.9	91.7	85.3	76.7	66.4	54.8	43.0	32.4		
55	34.6	46.5	59.4	71.7	82.4	91.2	97.4	101	102	100	95.8	89.0	79.8	68.7	56.3	43.6	32.2		
60	34.4	47.0	60.7	73.8	85.1	94.4	101	105	106	104	99.3	92.1	82.3	70.6	57.4	43.9	31.9		
65	34.0	47.2	61.6	75.3	87.2	96.9	104	108	109	107	102	94.5	84.2	71.9	58.1	43.9	31.5		
70	33.6	47.1	62.1	76.3	88.5	98.6	106	111	112	110	104	96.1	85.5	72.8	58.4	43.7	30.9		
75	32.9	46.7	62.0	76.6	89.2	99.6	107	112	113	111	105	97.0	86.1	73.0	58.3	43.3	30.3		
80	32.1	46.0	61.5	76.3	89.2	99.8	107	112	114	111	106	97.2	86.0	72.7	57.7	42.5	29.5		
85	31.1	45.0	60.5	75.4	88.4	99.1	107	112	113	111	105	96.5	85.2	71.8	56.7	41.4	28.6		
90	30.0	43.6	58.9	73.8	86.8	97.5	105	110	111	109	103	95.0	83.6	70.2	55.1	40.1	27.5		
95	28.9	42.0	57.1	71.9	84.8	95.5	103	108	109	107	101	92.9	81.6	68.3	53.4	38.7	26.6		
100	27.4	39.9	54.4	68.8	81.5	92.1	99.7	105	106	104	98.0	89.7	78.5	65.4	50.8	36.7	25.2		
105	25.3	36.7	50.2	64.0	76.2	86.5	93.9	98.8	100.0	97.9	92.3	84.2	73.3	60.7	46.8	33.8	23.4		
110	22.9	32.8	44.9	57.6	69.1	78.8	86.0	90.7	91.9	89.9	84.5	76.7	66.4	54.6	41.8	30.3	21.2		
115	20.2	28.5	38.8	50.1	60.5	69.5	76.3	80.9	82.0	80.2	74.9	67.6	58.0	47.3	36.1	26.3	18.8		
120	17.3	23.9	32.3	41.7	50.7	58.9	65.2	69.5	70.5	68.8	63.9	57.0	48.5	39.3	30.0	22.2	16.3		
125	14.4	19.3	25.6	32.9	40.2	47.1	52.8	56.7	57.6	56.1	51.7	45.5	38.3	30.9	23.8	18.0	13.7		
130	11.7	15.0	19.2	24.2	29.4	34.9	39.7	43.0	43.8	42.4	38.6	33.5	27.9	22.7	17.9	14.1	11.2		
135	9.21	11.0	13.5	16.3	19.2	22.8	26.2	28.7	29.3	28.2	25.3	21.8	18.2	15.4	12.7	10.5	8.93		
140	7.05	7.46	8.58	9.77	10.7	12.1	13.3	14.5	14.8	14.2	12.8	11.6	10.2	9.29	8.16	7.17	6.67		
145	5.21	4.38	4.60	4.75	4.64	4.50	4.03	2.88	2.16	3.08	4.09	4.46	4.24	4.42	3.91	3.67	4.20		
150	3.73	2.15	1.80	1.38	1.22	0.39	0.53	0.37	0.39	0.36	0.65	0.36	1.11	1.59	1.74	1.94	3.07		
155	1.86	0.87	0.60	0.46	0.39	0.36	0.37	0.36	0.37	0.35	0.35	0.34	0.35	0.46	0.58	0.51	1.49		
160	0.56	0.39	0.38	0.37	0.37	0.37	0.36	0.36	0.36	0.35	0.35	0.35	0.34	0.36	0.36	0.37	0.47		
165	0.41	0.37	0.37	0.37	0.37	0.37	0.36	0.36	0.35	0.36	0.34	0.35	0.34	0.36	0.36	0.37	0.39		
170	0.39	0.38	0.37	0.37	0.37	0.37	0.36	0.36	0.35	0.36	0.35	0.35	0.35	0.36	0.36	0.37	0.39		
175	0.00	0.00	0.00	0.00	0.00	0.00	0.00	0.00	0.00	0.00	0.00	0.00	0.00	0.00	0.00	0.00	0.00		
180	0.00	0.00	0.00	0.00	0.00	0.00	0.00	0.00	0.00	0.00	0.00	0.00	0.00	0.00	0.00	0.00	0.00		

C Range: 0 - 360DEG

C Interval: 10.0DEG

Test Speed: MEDIUM

Temperature:25.3°C

Operators:

Test Date:04 January 2023

γ Range: 0 - 170DEG

γ Interval: 2.5DEG

Test System:EVERFINE GO-2000A_V1 SYSTEM V2.00.456

Humidity:65.0%

Test Distance:6.340m [K=1.0000]

Remarks: